

Gibraltar Study Circle Annual Competition

ENTRY FORM

(To be completed by the entrant – One form per entry)

Name ...BERT BURTON....

Contact (Phone or e-mail ...anne_burton@sky.com.....

Brief description of entry

...HOTEL CACHETS ON COMMERCIALY USED GIBRALTAR, MAIL IN THE LATE 19TH AND EARLY 20TH CENTURY

.....
.....

Class: (Tick appropriate box)

Class – No. of sheets	No of sheets in the entry	Tick
1. Premier (Advanced) (32 sheets or more)		
2. Postal History (16 sheets maximum)		
3. Traditional (Adhesives) (16 sheets maximum)		
4. QEII (16 sheets maximum)		
5. GB used in Gibraltar (16 sheets) maximum)		
6. Miscellaneous (16 sheets maximum)	16	✓

Notes:

All sheets to be sequentially numbered.

This form and your exhibit should be sent to WebMaster (Mr S Lawrence – **therockeditor@outlook.com**) by the 30th June.

Hotel Cachets on commercially used Gibraltar Mail in the late 19th & early 20th Centuries

There were numerous hotels in Gibraltar in this period, the vast majority of which are no longer in business. All these hotels had their own cachet, either on printed stationery letter headings or on envelopes. They also featured different cachet designs and colours. This exhibit covers the above period.

References:- ¹ *The Postal History of Gibraltar* by Richard Garcia MBE & Edward Proud.

² *The Rock Newsletter of the Gibraltar Study Circle* issue 75.

1882 3rd December Gibraltar to United States

The Royal Hotel



1882 3rd December Gibraltar to Jefferson County.

Route	Gibraltar - San Fernando, Cadiz overland - San Fernando - Madrid by train - Madrid - Paris by train - Paris - Calais by train - Calais - Dover by ferry, Dover - London by train - train to either Tilbury or Southampton for joining the Transatlantic services to New York, - New York - Charleston by train.
Adhesive	GB QV 2½ ^d .
Markings	Decorative R (Royal) envelope. d/r oval ROYAL HOTEL RO1 cachet in purple GIBRALTAR KD10 (15.3.78)-(25.9.85) Code A, DE 3 82 CDS ¹ .
Backstamps	s/r LONDON NW DE 7 82 CDS.
Rate	2½ ^d correct postage rate to the United States.

Plan

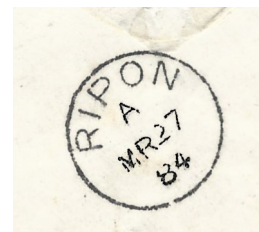
1-3 Royal Hotel
4-5 Calpe Hotel
6-7 Cecil Hotel

8-12 Grand Hotel
13-16 Bristol Hotel

1884 Cover from Gibraltar to United Kingdom

Royal Hotel situated off Main St opposite the Exchange where the Government House is now situated in front of the Piazza in John Mackintosh Square.

This has the Royal Hotel RO1 cachet



1884 22nd March Gibraltar to Ripon.

Route	Gibraltar - San Fernando, Cadiz overland - San Fernando - Madrid by train - Madrid - Paris by train - Paris - Calais by train - Calais - Dover by ferry, Dover - London by train - train to destination
Adhesive	GB QV 1½ ^d . The 1 ^d has the 14 dots variety.
Markings	Decorative R (Royal) envelope. d/r oval ROYAL HOTEL RO1 cachet in purple GIBRALTAR KD10 (15.3.78)-(25.9.85) Code A, MR 22 CDS ¹ .
Backstamps	s/r RIPON MR 27 84 CDS.
Rate	1½ ^d correct postage rate to the United Kingdom.

1891 Locally sent postcard

Uncommon use of locally used Postal Stationery card

This has the RO1 cachet

1891 3rd April Gibraltar locally to Gibraltar.

Route - Normal postal services within Gibraltar.

Adhesive - 5 Centimos Postal Stationery card.

Markings - d/r ROYAL HOTEL RO1 cachet in purple.
GIBRALTAR KD14 (25.10.87)-
(27.11.97) Code A AP3 91 CDS¹.

Backstamps Nil.

Rate - 5 CENTIMOS correct local postage rate.



10 Centimos was the correct rate to Continental countries at that time.

This has the RO1 cachet

1895 1st February Gibraltar to Kissingen

The Royal Hotel



Route - Gibraltar to Algeciras by ferry, train to Madrid, Paris onto Kissingen.

Adhesive - 10 CENTIMOS Postal Stationery Card.

Markings - GIBRALTAR KD15 (23.3.94)-(11.12.02) Code B, FE 1 95 CDS.
ROYAL HOTEL RO1 cachet in purple
BAD KISSINGEN 1 8 FEB 95 CDS receiving mark.

Rate - 10 CENTIMOS correct postage rate to Germany.

1893 Gibraltar to Germany

Calpe Hotel located on corner of Main Street & Turnbull's Lane
This has the Calpe Hotel CA3 cachet.



1893 18th February Gibraltar to Feuerbach, Wurttemberg.

Route	Gibraltar to San Fernando, Cadiz - San Fernando to Madrid by train - Madrid, Paris by train - Paris - Feuerbach by train.
Adhesive	50 Centimos.
Markings	Castle & Keys crested envelope. CALPE HOTEL CA3 cachet in purple.. GIBRALTAR KD14 (25.10.87)-(27.11.97) Code A, FE18 93 CDS ¹ .
Backstamps	CALPE HOTEL CA3 cachet in purple. s/r Feuerbach 23 FEB 93 receiving mark.
Rate	50 Centimos was the 2 nd weight step between ½oz and 1oz.

1897 Gibraltar to Switzerland

This has the Calpe Castle & Keys postal stationery logo..



1897 24th December Gibraltar to Lucerne.

- | | |
|------------|---|
| Route | Gibraltar to Algeciras by ferry , Madrid, Paris, Lucerne by train. |
| Adhesive | Gibraltar QV 5 CENTIMOS. |
| Markings | Decorative envelope with Castle & Keys in red.
GIBRALTAR KE16 (14.12.95)-(6.6.02) Code C, DE24 97 CDS ¹ . |
| Backstamps | LUZERN 28 XII 97 receiving mark.
Castle & Keys in purple. |
| Rate | 5 CENTIMOS was the correct printed paper rate. |

1899 Cover Gibraltar to United Kingdom

This has the CE1 cachet

1899 24th October Gibraltar to Sandhurst

Route - Gibraltar to Algeciras by ferry, train to Madrid, Calais via Paris, Calais to Dover by ferry, Dover to Sandhurst via London, by rail .

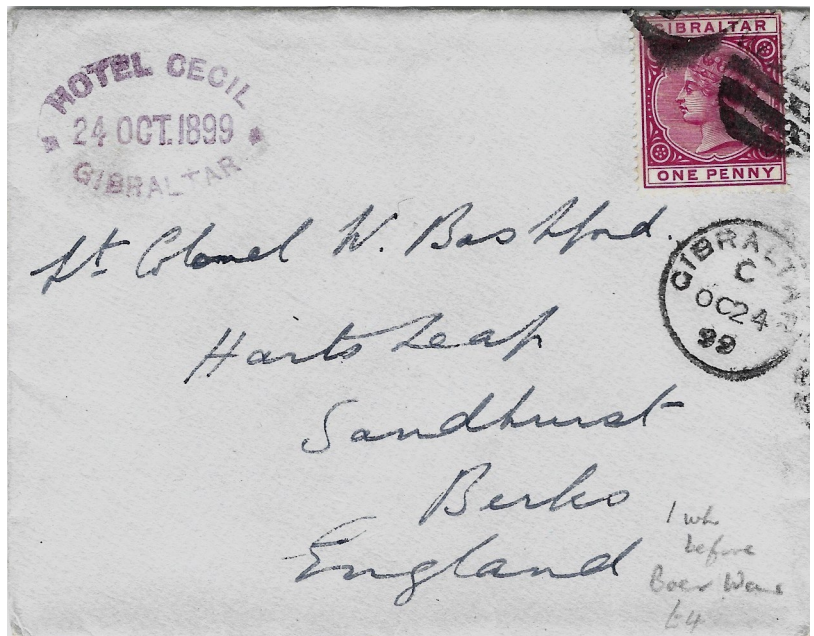
Adhesive - Gibraltar QV 1^d.

Markings - CE1 cachet in purple
GIBRALTAR KD16 (14.12.95)-(6.6.02)
code C, OC24 99 CDS¹.

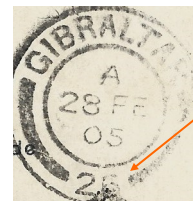
Backstamps 2 x indistinct circular
receiving marks - one looks like
CAMBERLEY.

Rate - 1^d correct rate to UK.

Interest - Cover sent one week prior
commencement of the Boer War.



The change from 26 to 25. They were the first Gibraltar doubling datestamps, and they bore the number "26" at foot . The letter "A" did not feature on them as a prefix before the number 26. There were at least three date-stamps, with the code letters A, B and C above the slugs for the date.



This has the CE3 cachet with Buckle Adornment

1905 28th February Gibraltar to Sandbach

The Hotel Cecil



Route - Gibraltar to Algeciras by ferry, train to Madrid & Calais, via Paris, Calais to Dover by ferry, Dover to Sandbach by train.

Adhesive - Nil.

Markings - Cecil Hotel CE3 cachet in purple with Buckle Adornment.
GIBRALTAR KD20 (15.09.03)-(6.6.07) Code A 28 FEB 05 CDS¹.

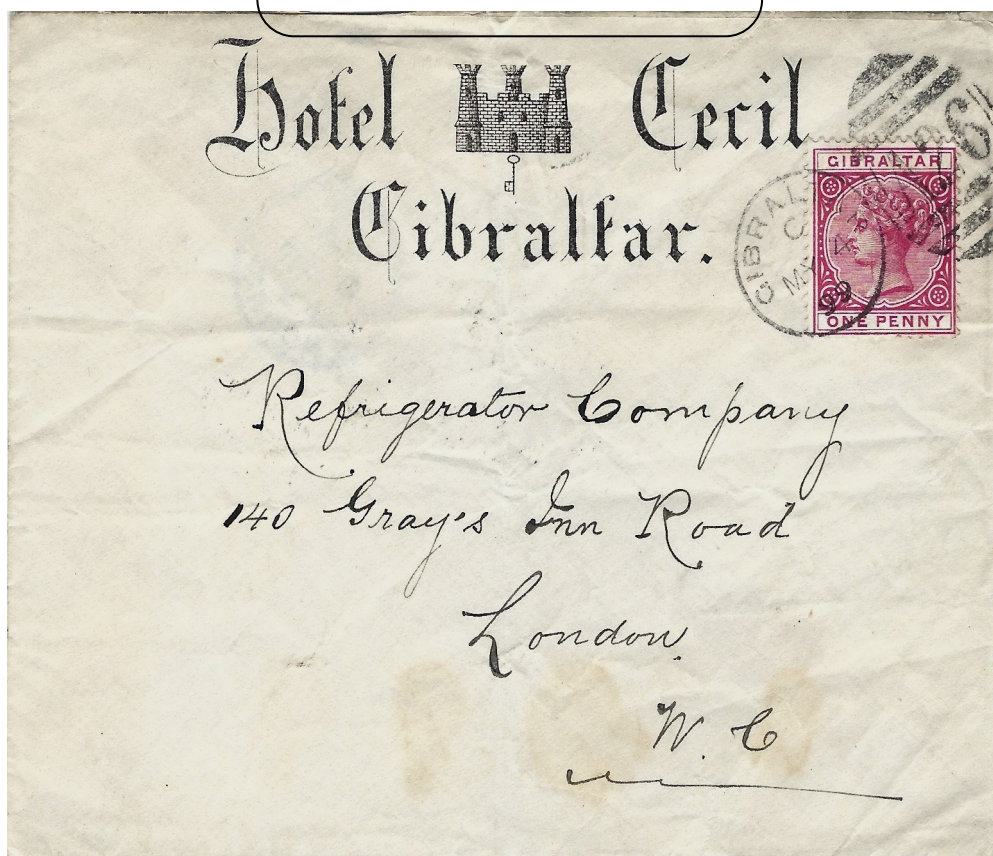
Note:- GIBRALTAR 26 not 25. No stamp affixed hence a 2^d - Tax due applied by the London Inland Section Office s/r SANDBACH MR 4 05 receiving mark.

Rate - 1^d was the correct postage rate to UK.

1899 Gibraltar to United Kingdom

The hotel Cecil located on Main St on corner with Bedlam Court.

The Hotel's official decorative envelope has been used



1899 4th May Gibraltar to London.

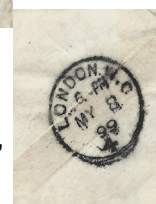
Route Gibraltar to Algeciras by ferry, train to Madrid & Calais via Paris, Calais to Dover by ferry, Dover to London by train.

Adhesive Gibraltar QV 1^d.

Markings Keys & Castle decorative envelope
GIBRALTAR KD16 (14.12.95)-(6.6.02) Code C, MY 4 99 CDS¹.

Backstamps LONDON W C 8 MY 99 receiving mark.

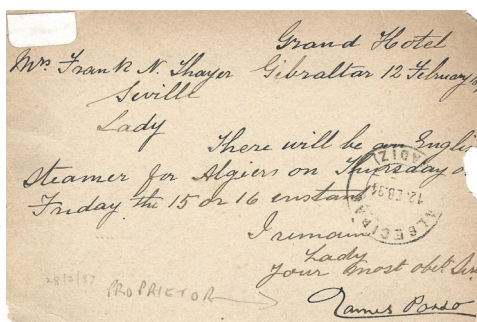
Rate 1^d correct rate to the UK.



1894 Postal Stationery Card from Gibraltar to Spain

The Grand Hotel was two doors down from the Cecil Hotel on the corner of Main St and Tuckey's Lane.

This has the Grand Hotel GR1 cachet



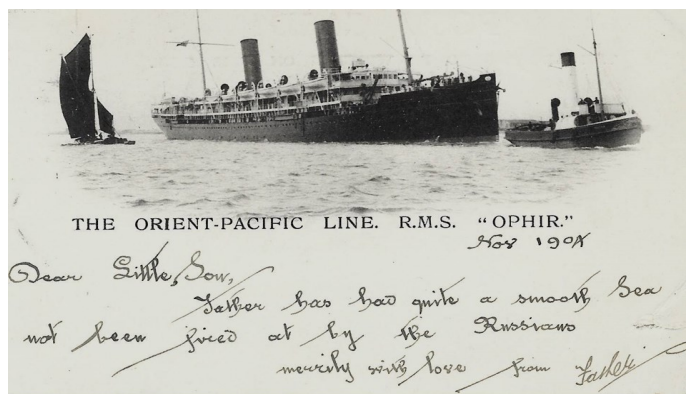
1894 12th February Gibraltar to Seville.

Route	Gibraltar to Algeciras by ferry, then train to Seville via Cordoba.
Adhesive	QV 10 CENTIMOS Postal Stationery card.
Markings	GRAND HOTEL GR1 cachet in purple. GIBRALTAR KD14 (25.10.87)-(27.11.97) Code A , FE12 94 CDS ¹ .
Backstamps	ALGECIRAS, CADIZ 12 FEB 94 CDS receiving mark.
Rate	10 CENTIMOS correct postage rate to Spain.

1904 PPC from Gibraltar to United Kingdom

The ship featured on this postcard RMS Ophir was used as the Royal Yacht by the King & Queen from 1901 as HMS Ophir.

This has the Grand Hotel GR4 cachet



1904 4th November 1904 Gibraltar to Devon.

Route Gibraltar - Algeciras by ferry, train to Madrid Calais via Paris, Calais - Dover by ferry, Dover - Devon by train.

Adhesive Gibraltar KEVII 1^d.

Markings GIBRALTAR KD20 (15.09.03)-(6.6.07) NO4 O4 CDS¹. GRAND HOTEL GR4 cachet in purple

Rate 1^d correct postage rate to United Kingdom.

1910 Cover from Gibraltar to United States

Although this cover probably went via ship to New York it may also have gone overland through Spain and France to the UK and then to the United States. This has the Grand Hotel profile on official hotel envelope with name of proprietor in a boxed cachet.



1910 24th November Gibraltar to Frederick, Maryland.

Route This was probably carried on the SS Princess Irene which departed Gibraltar for New York on the 28th November - New York to Frederick by train.

Adhesive Gibraltar KEVII 2½^d stamp.

Markings GIBRALTAR KD24 (2.1.10)-(25.8.15) 24 NO 10 CDS¹
Profile of hotel on printed stationery envelope in red.

Backstamp GRAND HOTEL GR4 cachet in purple

Rate 2½^d correct rate to the United States.

1916 Cover from Gibraltar to Italy

IL CAPITANO DI CORVETTA equivalent rank in the Royal Navy is Lt. Cdr.



1916 15th February. Gibraltar to Rome.

Route	Gibraltar to Algeciras by ferry, train to Madrid, Paris, onto Rome by train.
Adhesive	Gibraltar KGV 2½ ^d .
Markings	GIBRALTAR KD25 (1.1.10)-(28.12.16) 15 FE 16 CDS ¹ . Stamp of IL CAPITANO DI CORVETTA R.N.
Backstamps	GRAND HOTEL GR9 cachet in purple. ROMA CENTRO 20.11.16 CDS receiving mark.
Rate	2½ ^d correct postage rate Gibraltar to Italy.

1898 Gibraltar to United Kingdom

With the introduction of Spanish currency stamps on 1st August 1889 the correct rate of 25 CENTIMOS has been applied which was for sending to Postal Union Class A countries and the United Kingdom for letters up to ½ oz.

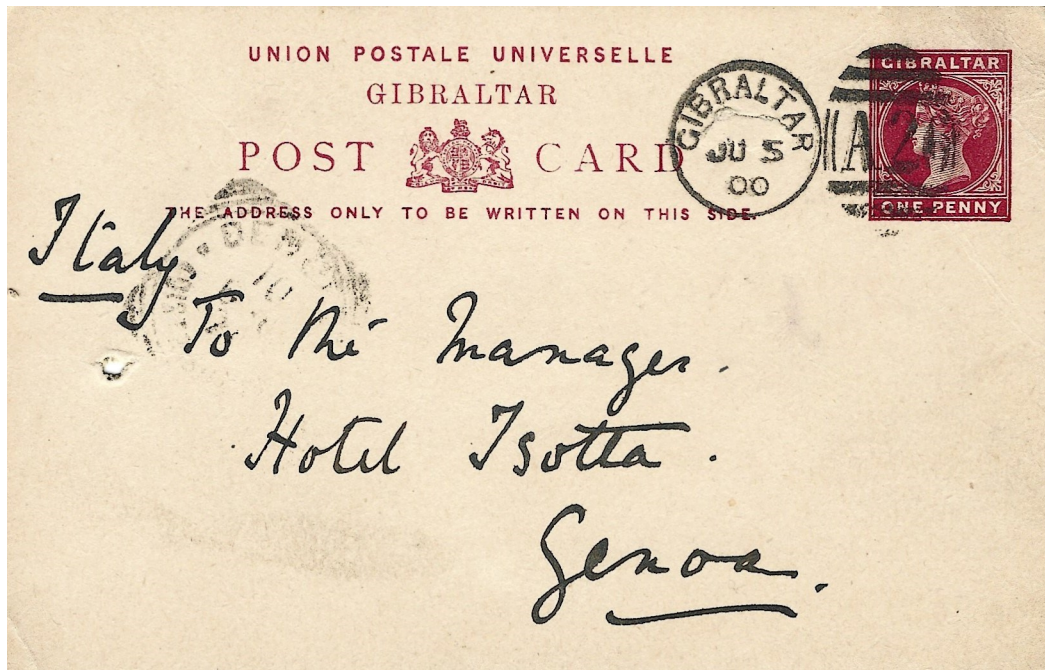
This has Bristol Hotel unlisted Garter cachet in red.



1898 1st February Gibraltar to Manchester.

Route	Gibraltar to Algeciras by ferry, train to Madrid & Calais via Paris, Calais to Dover by ferry, Dover to Manchester via London by train.
Adhesive	Gibraltar QV 25 CENTIMOS.
Markings	Bristol Hotel red garter cachet. GIBRALTAR KD16 (14.12.95)-(6.6.02) Code C, FE 1 98 CDS ¹ .
Backstamps	d/r MANCHESTER FE 6 98 CDS. BRISTOL HOTEL BR1 cachet in purple.
Rate	25 CENTIMOS correct postal rate to UK.

1900 Gibraltar to Italy



Hotel Bristol. Gibraltar
 June 5.
 Mr Aubrey Cartright
 will require 3 rooms with
 4 beds either the 18th
 June or the next
 time the Steamer from
 Naples comes in. 2nd
 or 3rd floors would do.
 There will be letters
 waiting for him at the
 Hotel Isotta.

Hotel Bristol Gibraltar
 June 5
 Mr Aubrey Cartright
 will require 3 rooms with
 4 beds either the 18th
 June or the next
 time the Steamer from
 Naples comes in 2nd
 or 3rd floors would do.
 There will be letters
 waiting for him at the
 Hotel Isotta.

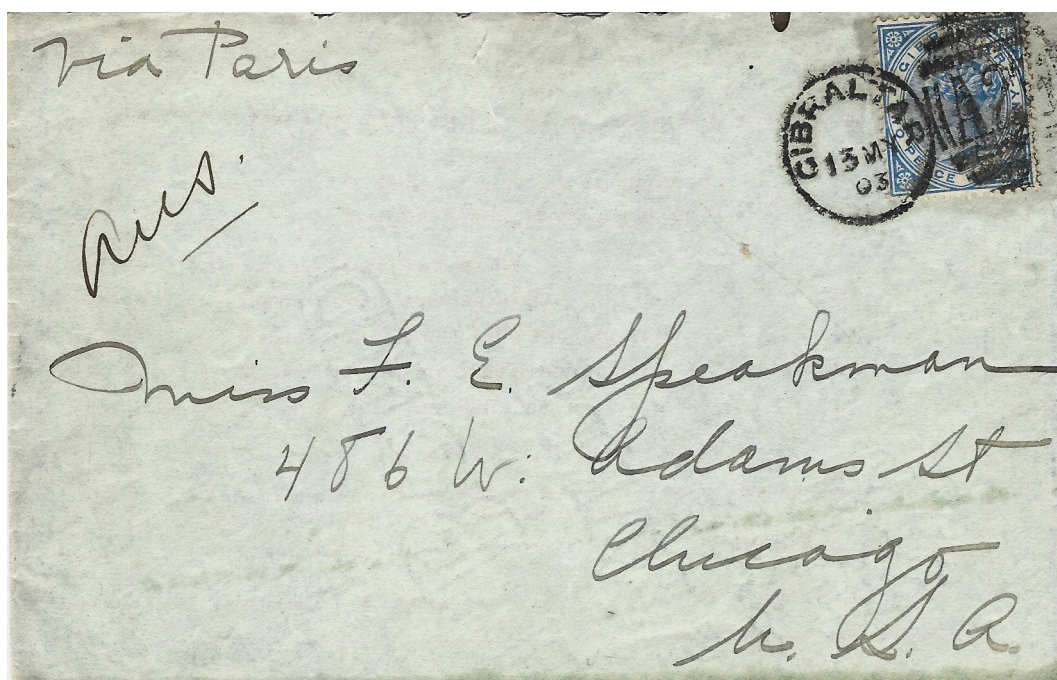


Isotta Hotel, Genoa

1900 5th June Gibraltar to Genoa
 Route Gibraltar to Algeciras by ferry—Algeciras to Madrid, this
 first leg would have been in the closed mails, from
 Madrid and would therefore have gone with the Spanish
 mails to Italy.
 Adhesive 1^d Postal Stationery card.
 Markings GIBRALTAR KD17 (23.2.99)-(30.8.03) JU05 00 CDS¹.
 Indistinct boxed GENOA JU ? 00 receiving mark.
 Rate 1^d correct rate to Italy

1903 Gibraltar to United States

This may well have gone via Le Havre and not Cherbourg as both ports served the transatlantic route.



1903 13th May Gibraltar to Chicago.

Route	Gibraltar to Algeiras by ferry, train to Madrid, Paris, Cherbourg or Le Havre for transatlantic crossing to New York, then by train to Chicago.
Adhesive	Gibraltar QV 2½ ^d .
Markings	GIBRALTAR KD17 (23.2.99)-(30.8.03) No code letter, 13 MY 03 CDS ¹ .
Backstamps	s/r CHICAGO ILL MAY 28 CDS receiving mark. BRISTOL HOTEL BR1 cachet in purple .
Rate	2½ ^d correct postage rate to the United States.

1904 Gibraltar to Scotland

This would have taken the overland route via Madrid and Paris



1904 1st February Gibraltar to Aberdeenshire.

Route	Gibraltar to Algeciras by ferry, train to Madrid, Paris, - Calais to Dover by ferry - Dover to Aberdeen by train
Adhesive	Gibraltar KEVII 1 ^d .
Markings	GIBRALTAR KD20 (15.9.03)-(06.6.07) No code letter, 1 FE 04 CDS ¹ .
Backstamps	BRISTOL HOTEL BR2 cachet in purple.
Rate	1 ^d correct postage rate to the U.K..

1914 Gibraltar to United Kingdom

Messrs Elliston & Cavell was a fashion shop in Magdalen St, Oxford. It remained as such until it was taken over by Debenhams in the early 1950's.

This has Bristol Hotel unlisted garter cachet in **black**.



1914 31st January Gibraltar to Oxford.

Route	Gibraltar to Algeciras by ferry, Madrid, Paris, to Channel Port by train, Channel Port to Dover by ferry. Dover to Oxford via London by train.
Adhesive	Gibraltar KGV 1 ^d .
Markings	Bristol Hotel black garter cachet. GIBRALTAR KD25 (1.1.10)-(28.2.16) 31 JA 14 CDS ¹ .
Backstamps	BRISTOL HOTEL BR2 cachet in green .
Rate	1 ^d correct postage rate to United Kingdom.